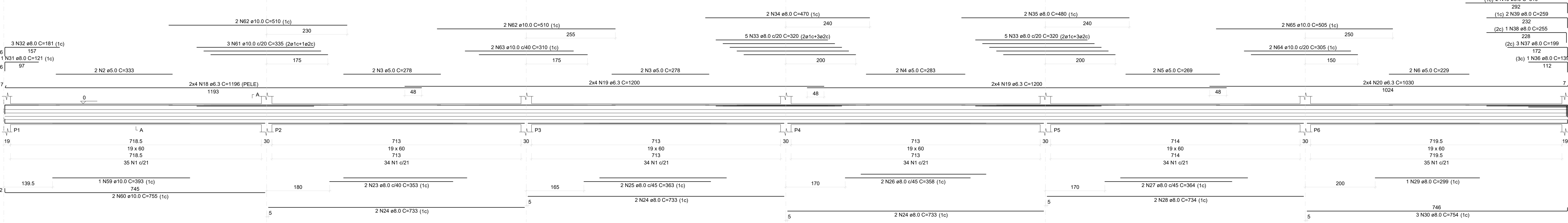


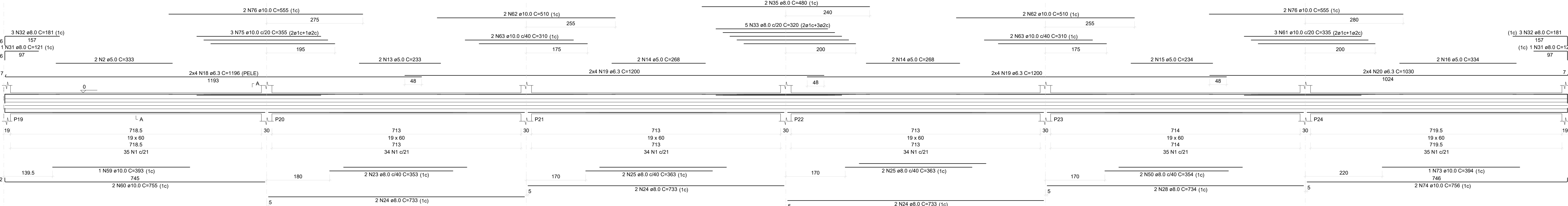
VB1

ESC 1:50



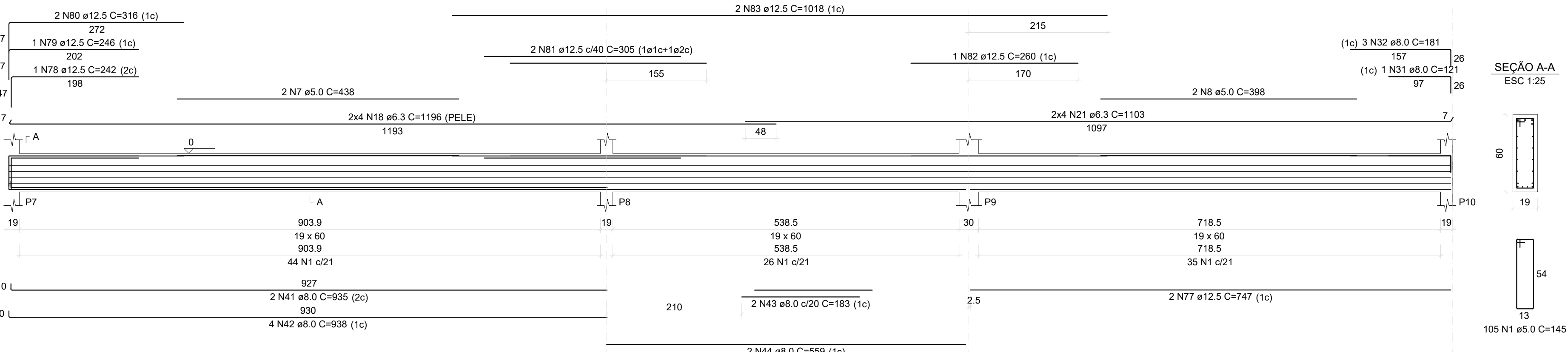
VB6

ESC 1:50



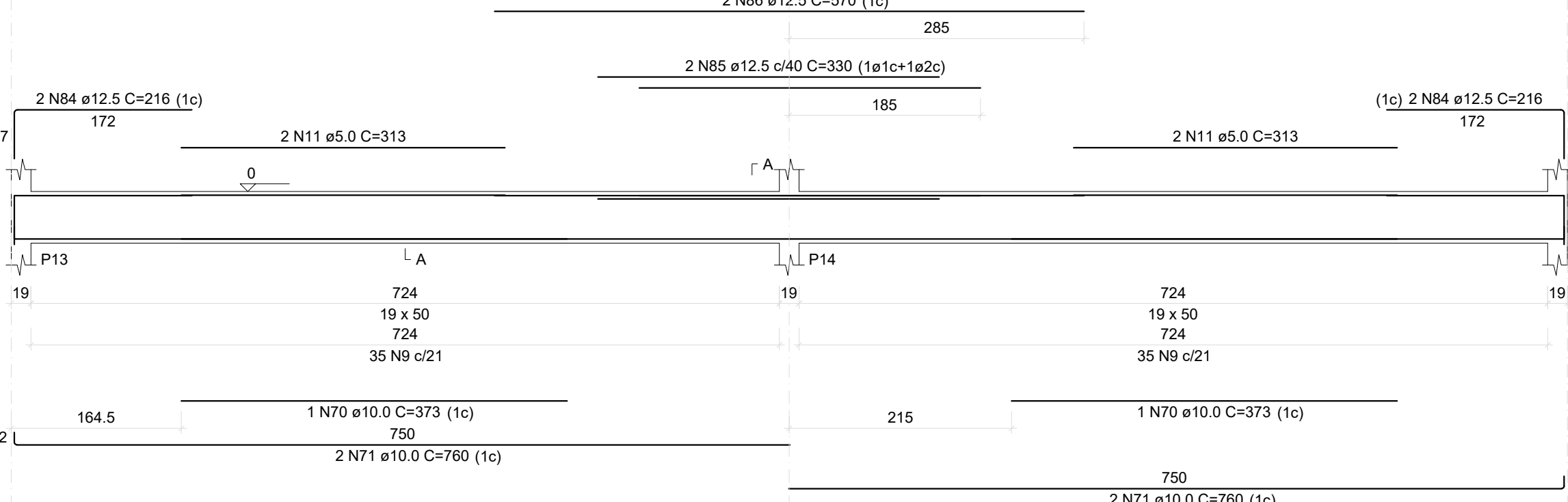
VB2

ESC 1:50



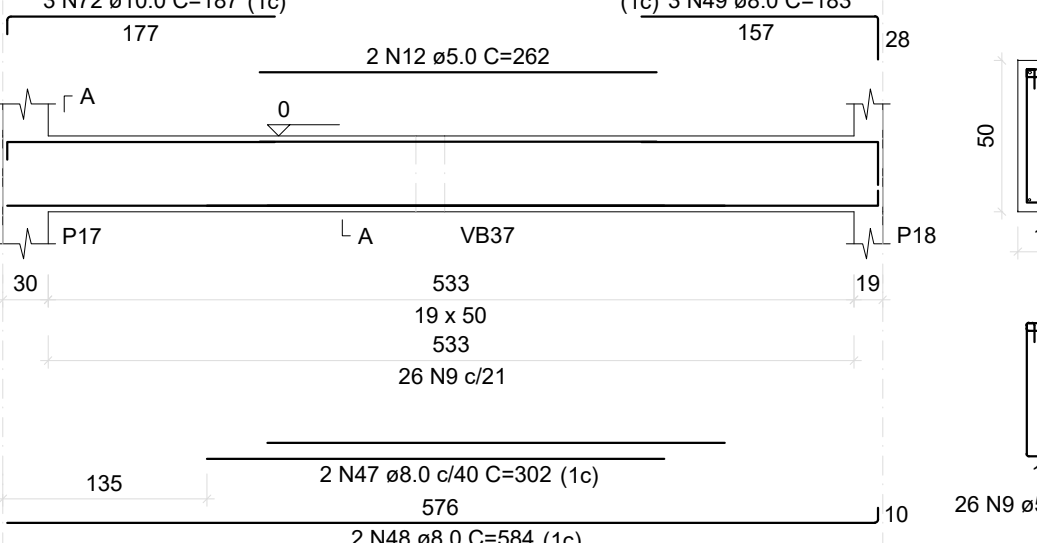
VB4

ESC 1:50



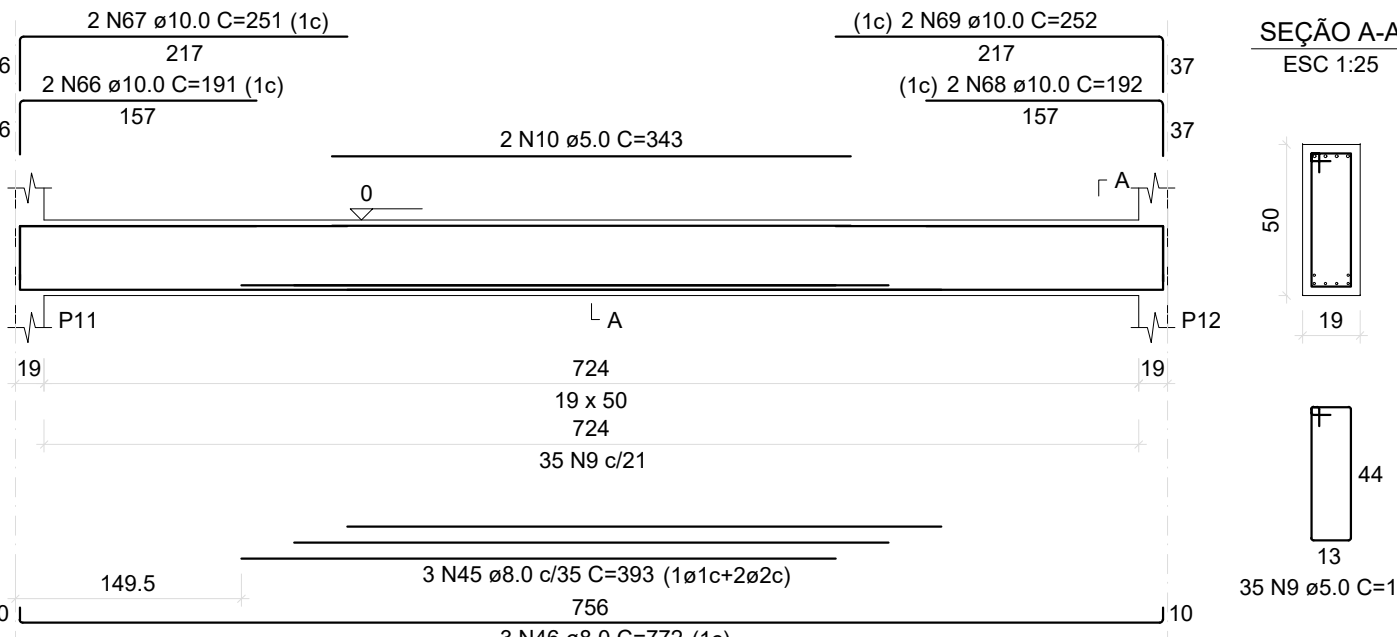
VB5

ESC 1:50



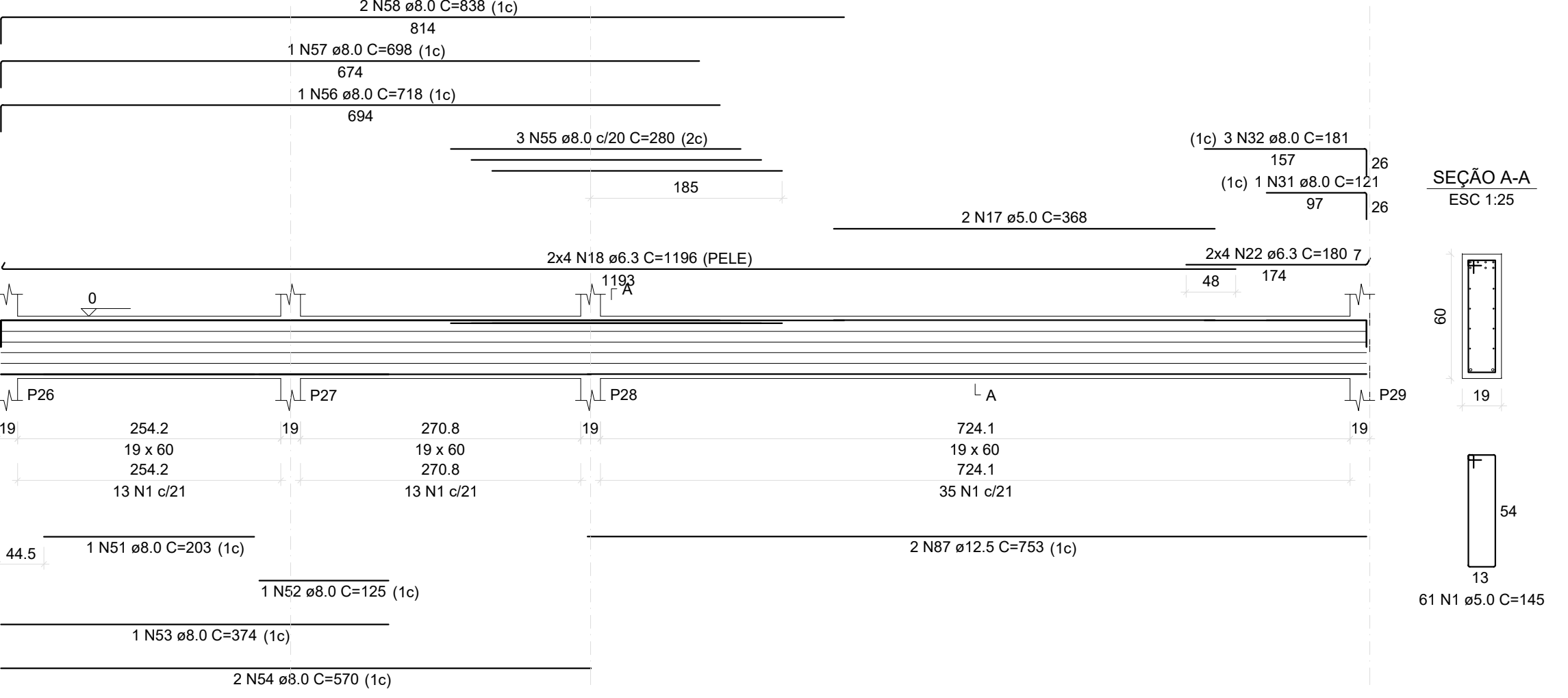
VB3

ESC 1:50



VB7

ESC 1:50



RELAÇÃO DO AÇO

ACO	N	DIAM (mm)	QUANT	C.UNIT (cm)	C.TOTAL (cm)
CA80	1	5.0	578	145	83850
	2	5.0	4	333	1332
	3	5.0	4	278	1112
	4	5.0	2	283	566
	5	5.0	2	299	598
	6	5.0	2	229	458
	7	5.0	2	438	876
	8	5.0	398	796	31875
	10	5.0	2	343	686
	11	5.0	4	313	1252
CA50	12	5.0	2	262	524
	13	5.0	2	233	466
	14	5.0	4	268	1072
	15	5.0	2	234	468
	16	5.0	2	334	668
	17	5.0	2	366	732
	18	6.3	32	1196	38272
	19	6.3	32	1200	38400
	20	6.3	16	1030	16480
	21	6.3	8	1103	8824
	22	6.3	8	180	1440
	23	6.3	6	353	2112
	24	8.0	12	733	8796
	25	8.0	3	393	1179
	26	8.0	2	358	716
	27	8.0	2	364	728
	28	8.0	4	734	2936
	29	8.0	3	754	2262
	30	8.0	3	754	2262
	31	8.0	1	480	480
	32	8.0	15	181	2715
	33	8.0	15	181	2715
	34	8.0	2	470	940
	35	8.0	2	480	960
	36	8.0	1	139	139
	37	8.0	1	199	199
	38	8.0	1	255	255
	39	8.0	1	259	259
	40	8.0	2	319	638
	41	8.0	2	335	670
	42	8.0	4	938	3752
	43	8.0	2	183	366
	44	8.0	2	559	1118
	45	8.0	3	393	1179
	46	8.0	3	772	2316
	47	8.0	2	302	604
	48	8.0	2	584	1168
	49	8.0	2	354	708
	50	8.0	1	203	203
	51	8.0	1	125	125
	52	8.0	1	374	374
	53	8.0	1	294	294
	54	8.0	2	570	1140
	55	8.0	3	280	840
	56	8.0	1	718	718
	57	8.0	1	698	698
	58	8.0	2	638	1276
	59	10.0	2	393	786
	60	10.0	4	755	3020
	61	10.0	6	335	2010
	62	10.0	8	510	4080
	63	10.0	6	310	1860
	64	10.0	2	305	610
	65	10.0	2	595	1190
	66	10.0	2	191	382
	67	10.0	2	251	502
	68	10.0	2	192	384
	69	10.0	2	252	504
	70	10.0	2	373	746
	71	10.0	4	765	3060
	72	10.0	3	187	561
	73	10.0	3	394	1182
	74	10.0	2	756	1512
	75	10.0	3	350	1050
	76	10.0	4	555	2220
	77	12.5	2	471	942
	78	12.5	1	242	242
	79	12.5	1	240	240
	80	12.5	2	316	632
	81	12.5	1	260	260
	82	12.5	1	1018	1018
	83	12.5	2	330	660
	84	12.5	4	216	864
	85	12.5	2	330	660
	86	12.5	2	370	740
	87	12.5	2	733	1466

RESUMO DO AÇO

ACO	DIAM (mm)	C.TOTAL (m)	PESO + 10% (kg)
CA50	6.3	1634.2	278.4
CA50	8.0	818.6	225.1
CA50	10.0	246.9	167.4
CA50	12.5	96.9	102.7
CA50	5.0	1118.8	189.7
RESUMO TOTAL			
CA50	773.6		
CA80	188.7		
Volume de concreto (C-25) = 16.34 m³			
Área de forma = 198.76 m²			

ESTADO DE MATO GROSSO PREFEITURA MUNICIPAL DE BARRA DO GARÇAS <small>Rua Comend. EST. 001 - BARRA DO GARÇAS - MT - CEP 76.600-000</small>		SECRETARIA MUNICIPAL DE PLANEJAMENTO URBANO E OBRAS 09/13
COORDENADAS: 15° 53' 15.49" S, 52°18' 57.83" O		APROVAÇÃO
Obra: CONSTRUÇÃO DE UNIDADE ESCOLAR COM QUADRA POLIESPORTIVA DA ESCOLA MUNICIPAL DOM JOSE SILVA		
Corridor: PROJETO ESTRUTURAL IMPLANTAÇÃO GERAL		
Local: RUA INDEPENDÊNCIA, SE LOZ CAMPANAS, BARRA DO GARÇAS - MT		
Propriedade: Prefeitura Municipal Barra do Garças		
Proprietário: Autor do projeto		
Prefeitura Municipal		Assinatura do projeto
Área Construída: CAD	Dimensionado: JANEIRO/2023	Escala: INDICADA
Arquivo:		

